



**These are scans of textiles  
designed by Tammis Keefe.**

**Logo sketch was applied to these  
scans and is not on the textiles.**

**This selection shows images  
exploring abstract patterns.**

**[www.nwfestival.com](http://www.nwfestival.com)**





James' hope







Thomas's logo





Handwritten text: *Handwritten text*







TAMMIS keffiyeh







Thomas Keefe





TAMMIS keefe





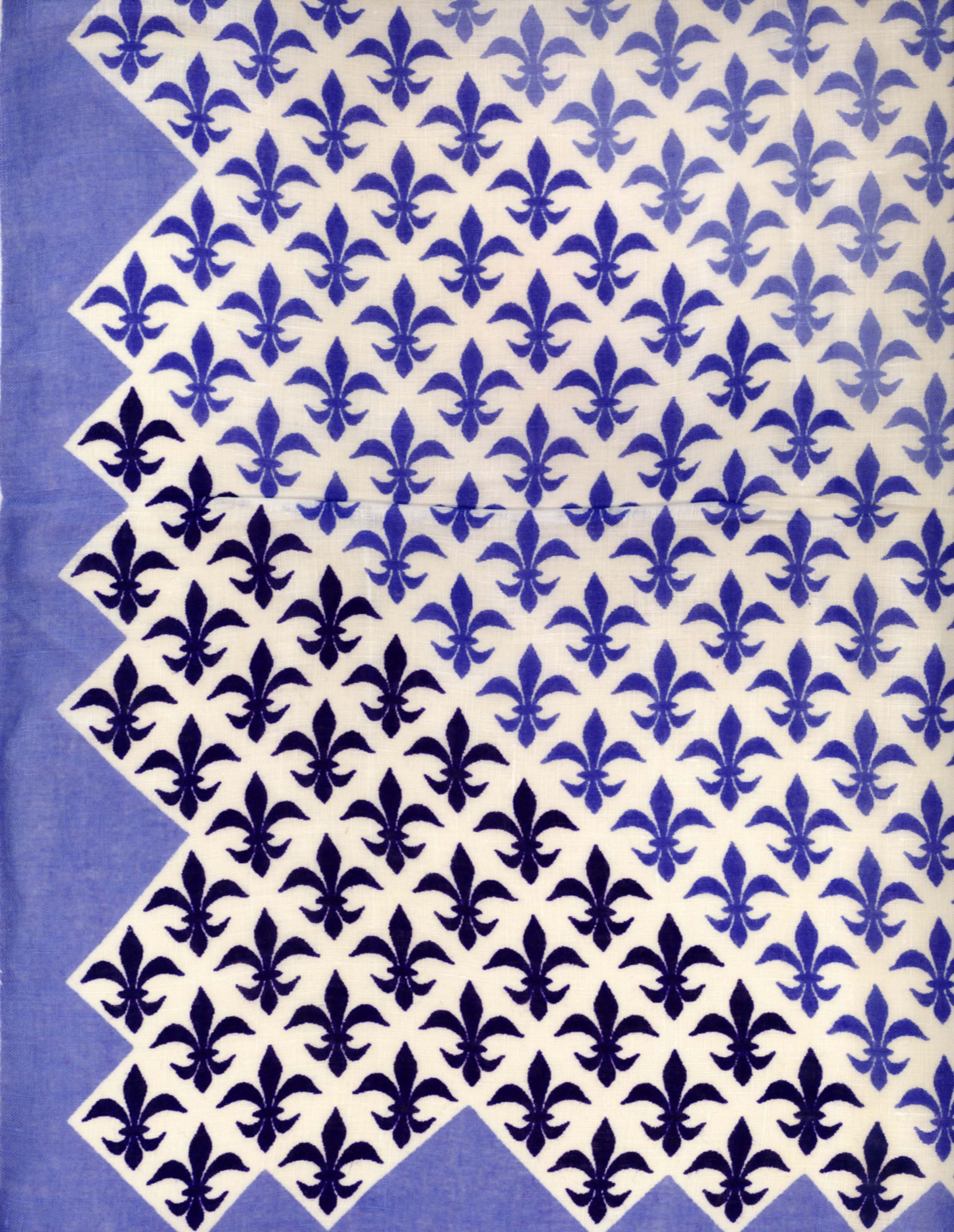
TAMMIS keete





TAMMIS keete





Tammis keefe









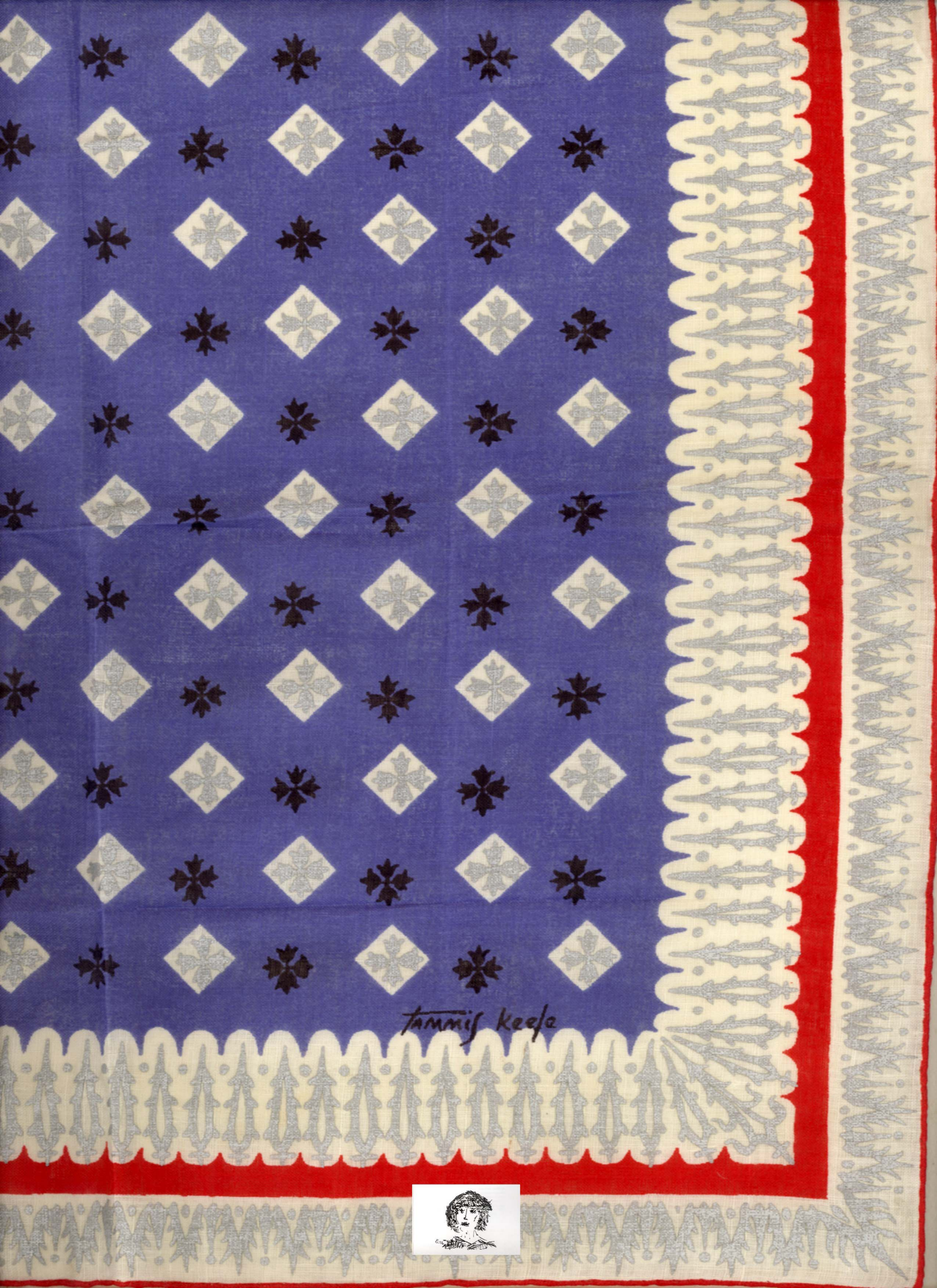






*Amnis keefe*





tammis keeja







*Tamnis keele*







Thomas Keefe







Trinity keeps

