



**These are scans of textiles  
designed by Tammis Keefe.**

**Logo sketch was applied to these  
scans and is not on the textiles.**

**This selection shows images of  
human figures, the Northwest, and  
New York.**

**[www.nwfestival.com](http://www.nwfestival.com)**







Jamme Keefe







Tammi's keeps





Tammij keefe



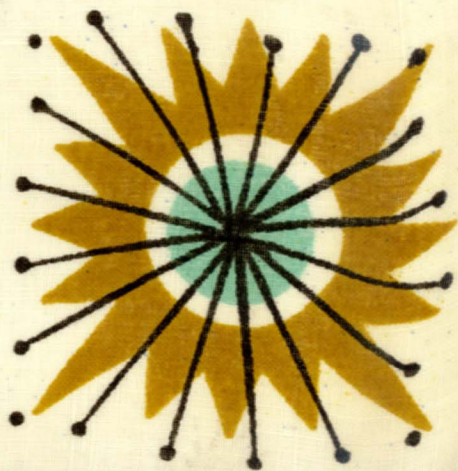




Tammy Keefe







Tammis keefe





© Tamiig keefe







Tammis keefe







TAMMIS Keefe





MT. RAINIER

GRAND COULEE DAM

TAMMIS keefe





COLUMBUS  
UNITED STATES  
DE FRANCE  
EEN ELIZ.  
GSHOLM

ROCKEFELLER  
CENTER

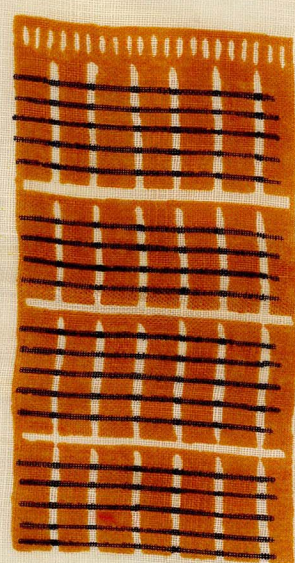


ZOO

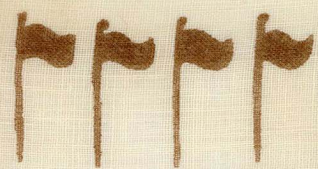


5TH AVENUE

MADISON



UNITED NATIONS



EAST RIVER



Lon

NEW YORK - NEW YORK - IT'S A

©Tammi's kee/le







EMPIRE  
BUILD

WASHINGTON  
SQUARE

WALL  
STREET

CHINATOWN

BROOKLYN

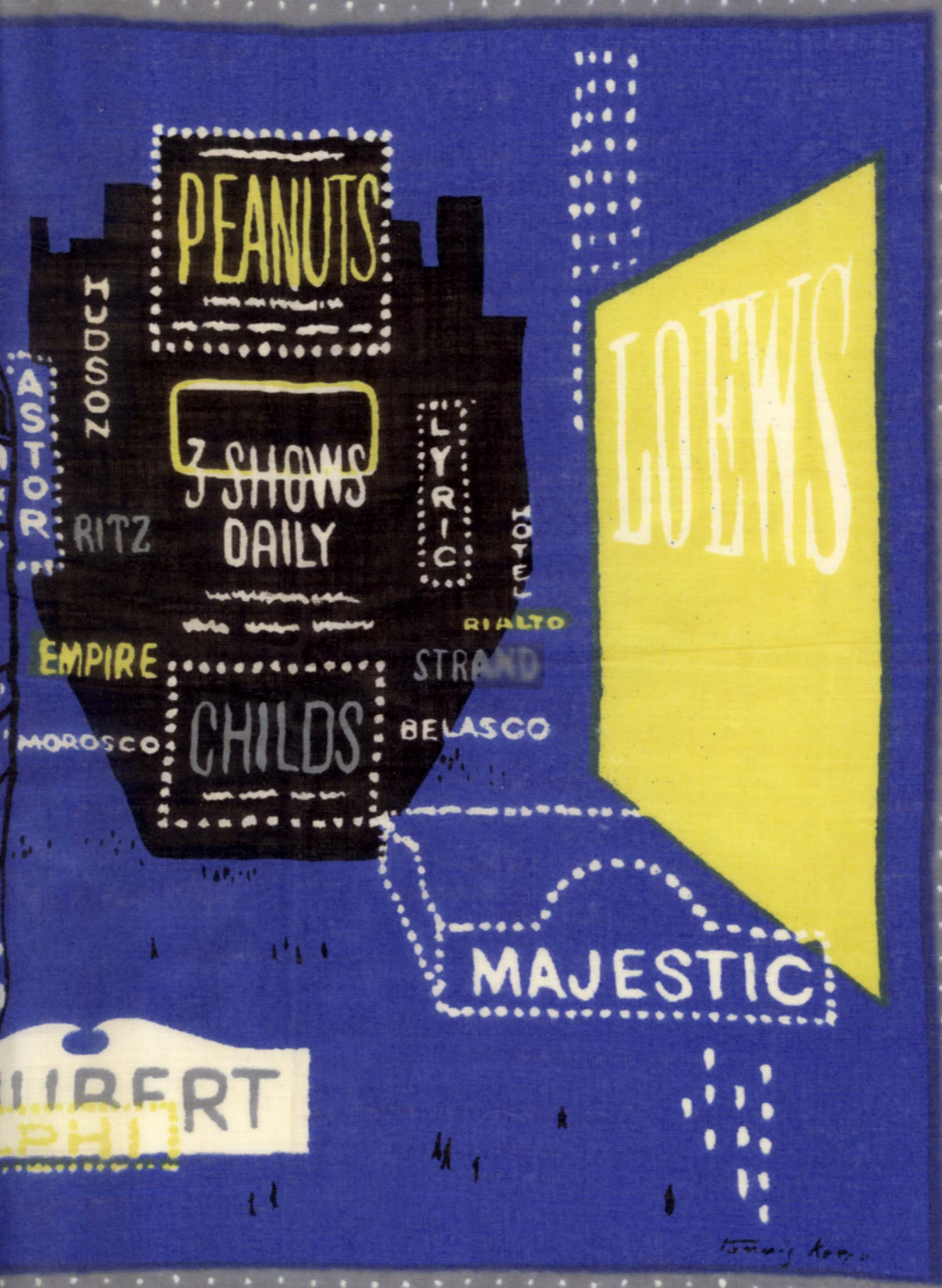
NEW YORK - NEW YORK - IT'S

© TAMM: keefe





NEW YORK \* NEW



TIMES SQUARE \* 42nd ST.

NEW YORK \* NEW YORK





NEW YORK \* NEW



*Twining Hoops*

★ CENTRAL PARK ZOO ★

ORK \* NEW YORK

